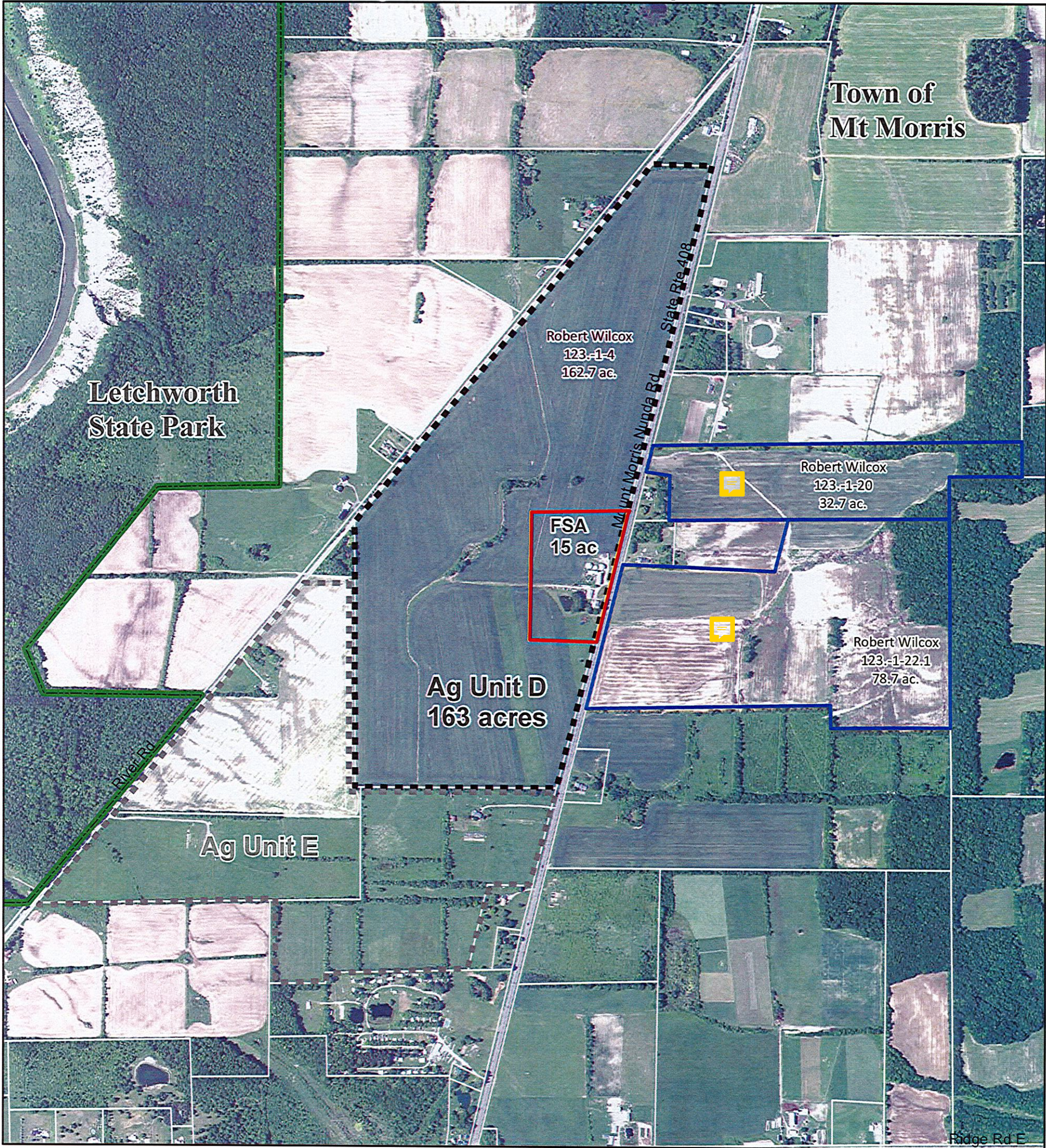


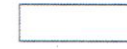





Hill Crest Farm  
Ag Unit D - Site Plan Map



**Legend**

- |  |  |
|--|--|
|  Ag Unit              |  Permanent Waterway     |
|  Tax parcel           |  NYS Parks - Letchworth |
|  Farmstead Area (FSA) |  Excluded Parcels       |

0 0.5 1 Miles





Round 17 New York State Farmland Protection Implementation Grant Application

**Hill Crest Farm – Ag Unit D**

**Farmstead Area:**

Need: Need: This 15 acre designated Farmstead Area encompasses the main farm operation center for land in the Town of Mt Morris farmed by the Hill Crest Farm. The farmstead includes an equipment shop, grain bins for corn and soybean storage, equipment storage sheds, and a two story residence.

Size: The 15 acre size encompasses the existing farm operation, centered in the Farmstead Area. Additional undeveloped area is included in the Farmstead Area to allow for business operation expansion around the existing facility allowing for growth of the farm operation in the future.

Location: The location is determined by the location of the existing residence and farm buildings, and potential expansion along the existing driveways.

**Excluded Parcels:**

Tax parcels 123.-1-20 and 123.-1-22.1

Need: Both of these tax parcels are under contract with EDF Renewables for development of a solar array. The solar array is part of the Morris Ridge Solar Energy Center which includes approximately 1200 acres of land within a 3 mile radius of this Ag Unit.

Size: The two tax parcels ( 123.-1-20 and 123.-1-22.1) total 111.4 acres. The contract between Robert Wilcox and EDF Renewables encompasses approximately 90 acres of the 111 acres of land.

Location: Robert Wilcox choose this land for solar development due to the poor quality of soils.