



Have you seen a Spotted Lanternfly? *Let's check!*

EGG MASSES: September - May

Found on tree bark, rusty metal, rocks, outdoor furniture, vehicles, and any flat surfaces. About 1" long and 1/2" - 3/4" wide. Masses have a mud-like covering, that varies in color from white to tan to grey or brown. Freshly laid eggs are often shiny and appear to have a waxy coating that becomes dry and cracked over time. Old egg masses can shed their covering and look like four to seven rows of seed-like eggs, 30 - 50 eggs total.



NYMPHS: May - September

Black with white spots without wings, becomes red with white spots and black patches as it matures. Fourth instar nymphs are over 1/2" inch long. Hop suddenly when approached or touched.



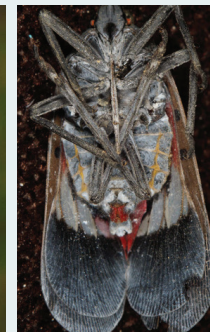
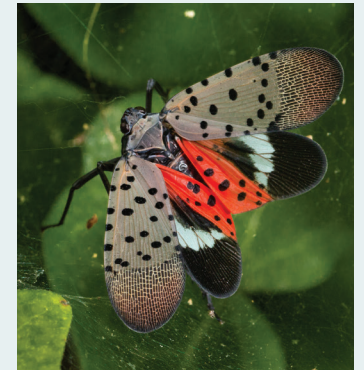
EARLY NYMPH
seen from
May until July



LATE NYMPH
seen from
July until October

ADULTS: July - December

At rest: greyish-faint pink wings with many round black spots. Wing tips are black and grey with a webbed appearance. Flying or startled: insect will show bright red hind wings that are 1.5" - 2.5" wide with wings spread. Adults are about 1" long and 1/2" wide with wings folded. Adults can hop several feet if startled.



To report a spotted lanternfly sighting, scan the QR code, or visit:
<https://agriculture.ny.gov/slf>



Department of
Agriculture
and Markets